

TAMMERMATIC T700 OPTIONS

Contents of the wash machine can be chosen by the customer in many ways. Here are some of the possible options to have.

- **Customer Design**

You can choose the colors of the machine's plastic parts, brush colors and have your own logo on front (and back) panel and thus make the wash machine look your own.



- **Traffic and Guidance lights**

Various model options can be selected for in and out driving guidance to and from the wash hall, as well as for the informative lights in the wash machine itself. In addition, you can add light bars indicating the remaining wash time.

- **Running Tracks**

In addition to the traditional galvanised running tracks, we offer stainless steel (SS) tracks. Lifetime of the SS tracks is multiple compared to the traditional ones and therefore a more sustainable choice. SS tracks are delivered with a track washer.

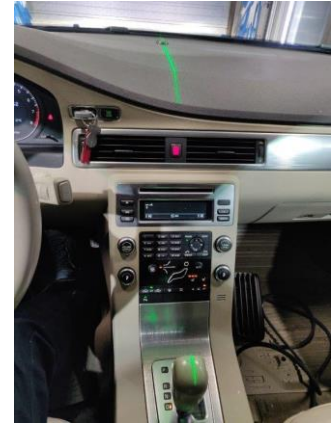
- **Guide Rails**

Guide rails are installed next to the running tracks to guide the customer to the correct wash point. The guide rails also protect the wash machine and are available in both traditional painted ones or with a LED lighting. Instead of, or in addition to, guide rails, there are reflector elements to make driving into the right place easier.



- **Middle Line Guide (Laser)**

This light makes it easier for the wash customer to drive in straight in the middle of the wash machine. The green laser beam shows on the dashboard and helps the driver to get their vehicle straight.



- **Chassis Wash**



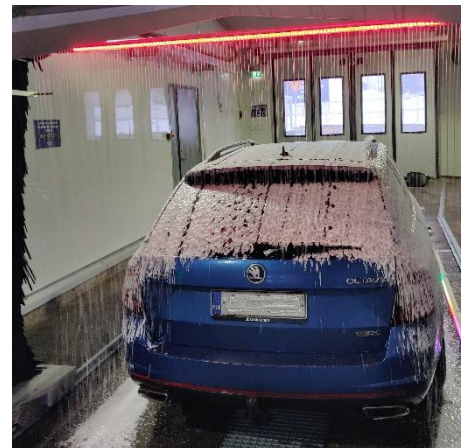
Tammermatic's chassis wash is integrated into the wash machine, so there is no need for fixed floor installations. This also facilitates the maintenance of the washbay. Our chassis wash washes the hems and wheel arches of the car, but not the chassis up to the middle, which means that the car's sensitive technology is safe.

- **Insect Arch**

In the summer, the Insect Arch intended for applying prewash chemical, spreads the detergent from the upper edge of the windshield to the front of the car before the pre-detergent crossing covering the entire car.

- **Foam Rain**

This eye-catching additional pre-wash foam is a foam waterfall that offers an attractive and experiential element for the wash customer.



- **Wheel Wash and Wheel Brushes**

Wheel brushes (21") with their own shampoo pump make washing tires and rims more efficient.

- **Soft Brushes**

Large washing foam brushes with tilt and shampoo feed; 12 color options of brushes (and their combinations) according to the customer's concept.

To offer you something extra, soft SHAKE brushes make a visually different brushing movement that simulates hand wash.



- **Rear Tilting of the Side Brushes**

The side brushes tilt approx. 15° behind the car, making washing more efficient, especially for cars with a rounder rear.



- **Splash Guards for Side Brushes**

Stainless steel. Protect the walls of the wash hall from splashes and thus facilitate cleaning. Available for every machine height.

- **Wax Arches**

Drying wax equipment is required as a minimum, but for various polishing and special waxes, you can choose e.g. polishing wax or RainLux arches.

If you want to use two different polishing waxes or do a double polishing program, you need to select two different polishing wax arches.

In addition to the drying wax, if you want to offer your wash customer special coating wax Rainlux, it requires its own spreading system. Rainlux guarantees optimal drying results and gives an excellent gloss, protects paint surfaces and makes the drops slide off the car's glass surfaces in rainy weather.

- **Tyre Shine**

Polishing the tire completes the end result of a clean and shiny car. The conditioner is brushed onto the surface of the tires, which makes them look like new. Only from Tammermatic (patented).



- **Rear Wax Arch**

It is possible to shorten longer polishing programs with the help of the rear wax arch because it enables several functions on the same crossing.

- **Automatic shape recognition**

The scanner enables the sale of all wash programs for all cars and no separate ski box or pick-up programs are needed. An absolute safety factor, especially in unmanned car wash stations. Only from Tammermatic (patented).



- **Antifreeze system / Antifreeze alert**

Antifreeze is most often installed in machines that are installed outdoors but it is also suitable for unmanned places in countries with a real winter. If the temperature in the wash hall drops too low, the machine empties the water hoses so that the freezing water does not break anything.

The freeze alarm is a lighter option, i.e. the machine stops if the temperature in the wash hall drops to freezing, e.g. due to the doors being left open. The wash machine sends an alarm notification about this.

- **Dry Run Protection**

If the wash machine does not get pressure in brush water arch, the machine stops itself to avoid damage.

- **Button Box for Steering / Tablet**

If there is no direct line of sight from the technical room to the wash bay, it is useful to put a separate control unit on the wall of the wash bay for moving the machine or alternatively, use a movable one: a tablet with a user interface.

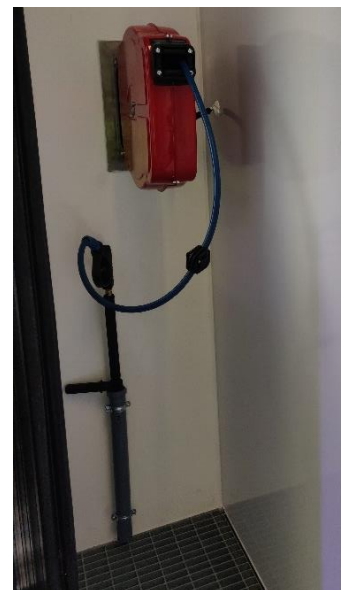


- **Hall Maintenance**

Available in both standard and stainless steel steel hose reels that use HP station. A floor / wall cleaning programs can be connected to the wash machine.

- **Programmable Washbay lights**

LED-spot lights are programmable to change colours.



- **Other equipment**

We also have wash machine related products available, such as compressors, drainage basins for chemicals, chemicals containers, vacuum cleaners and tokens.